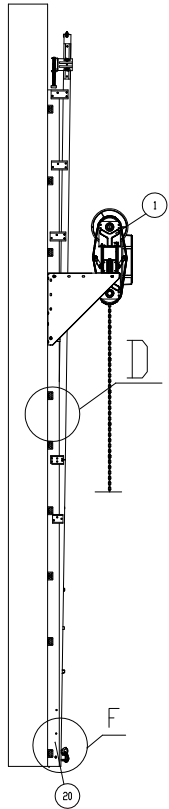
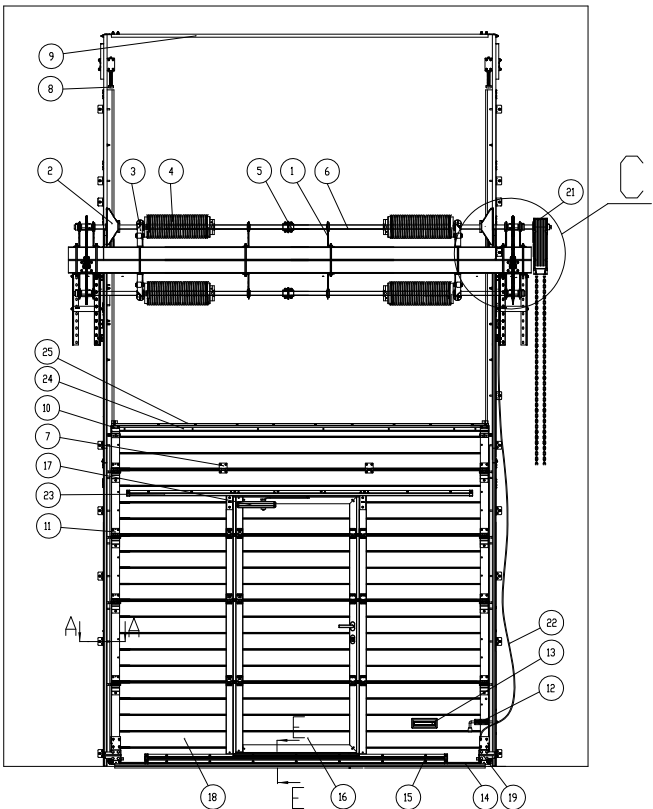


Industrial doors

Vertical type with bottom shaft positioning.

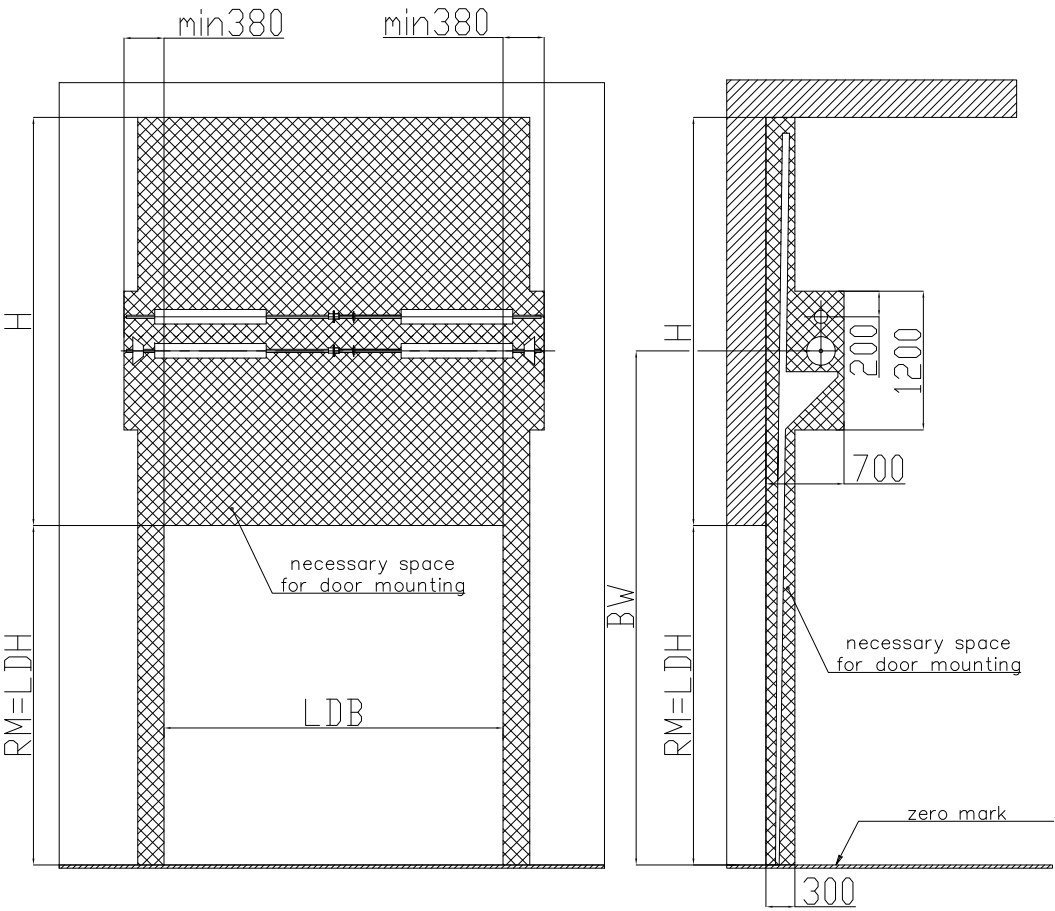
Two-shaft balance system

Description of door construction with a wicket



Pos	Title	Code number
1	intermediate bracket	IB-152-5/4
2	chain drum	CD01BV-5/4
3	spring break device	SBD-TSS5
4	spring	TSA85x512x1750
5	couple adjustable	AC-5/4
6	shaft	TSS4004
7	intermediate hinge	IH113
8	spring bumper bracket	SB-485
9	headroom	PRG7N
10	upper roller bracket	RB1125
11	side roller bracket	RB1123
12	slide bolt	SB0100
13	handle	HG1007
14	bottom seal	RSB10
15	reinforcing profile	PRG-12
16	wicket	
17	door pusher sliding rod	DP0207
18	section	
19	bottom roller bracket with safety lock against steel rope tearing	RB1446
20	vertical track profile	
21	electrical drive	Dynamic xs. plus
22	steel rope	105610
23	reinforcing profile	PRG-17
24	top profile	PRG-14
25	top seal	RST01

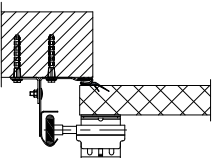
Mounting drawing of the door



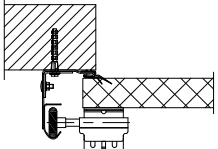
Parameter	Title	Calculating formula or value
H, mm	headroom height	min RM+340
BW, mm	height up to the axis shaft	or min RM+1200 do RM-HL-400
* The size is to be stipulated when ordering. Default value: BW=RM+1500 mm		

A(5:1)
Mounting types of lifting bars of vertical track profiles:

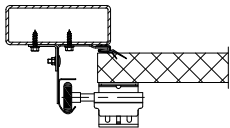
a) mounting to the wall, triangular plate B0300 outside vertical track profile



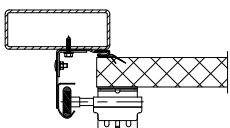
b) mounting to the wall, triangular plate B0300 inside vertical track profile



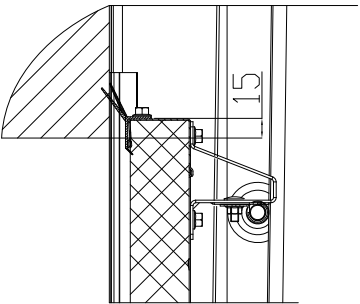
c) mounting to the tube, triangular plate B0300 outside vertical track profile



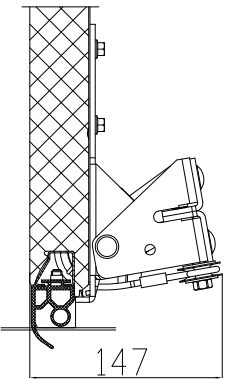
d) mounting to the tube, triangular plate B0300 inside vertical track profile



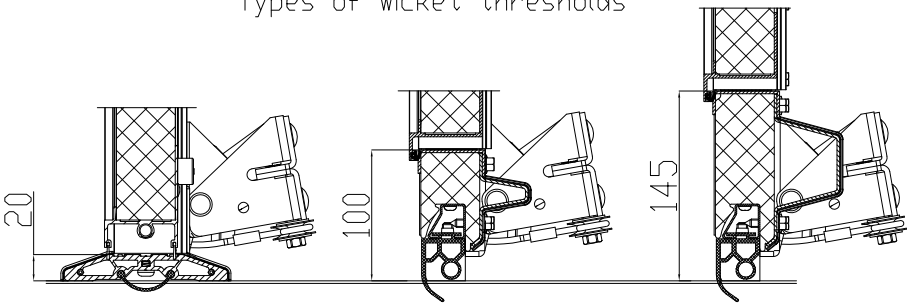
D(10:1)
place of door leaf adjoining to the headroom



F(10:1)



E(10:1)
Types of wicket thresholds



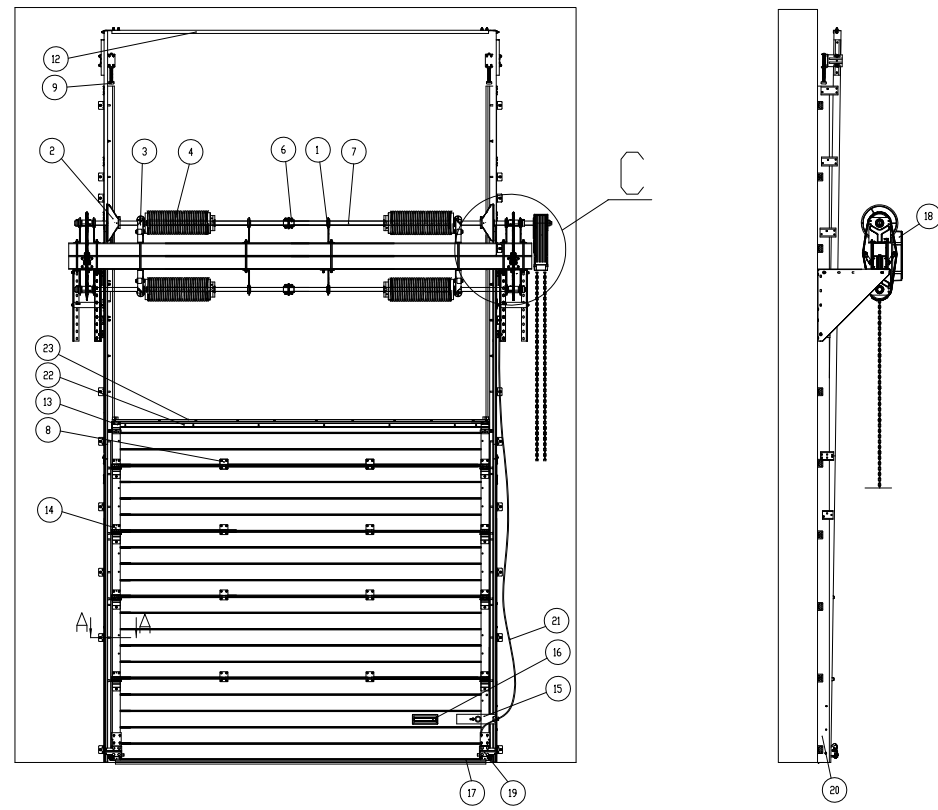
a) flat threshold b) low threshold c) standard threshold

Industrial doors

Vertical type with bottom shaft positioning.

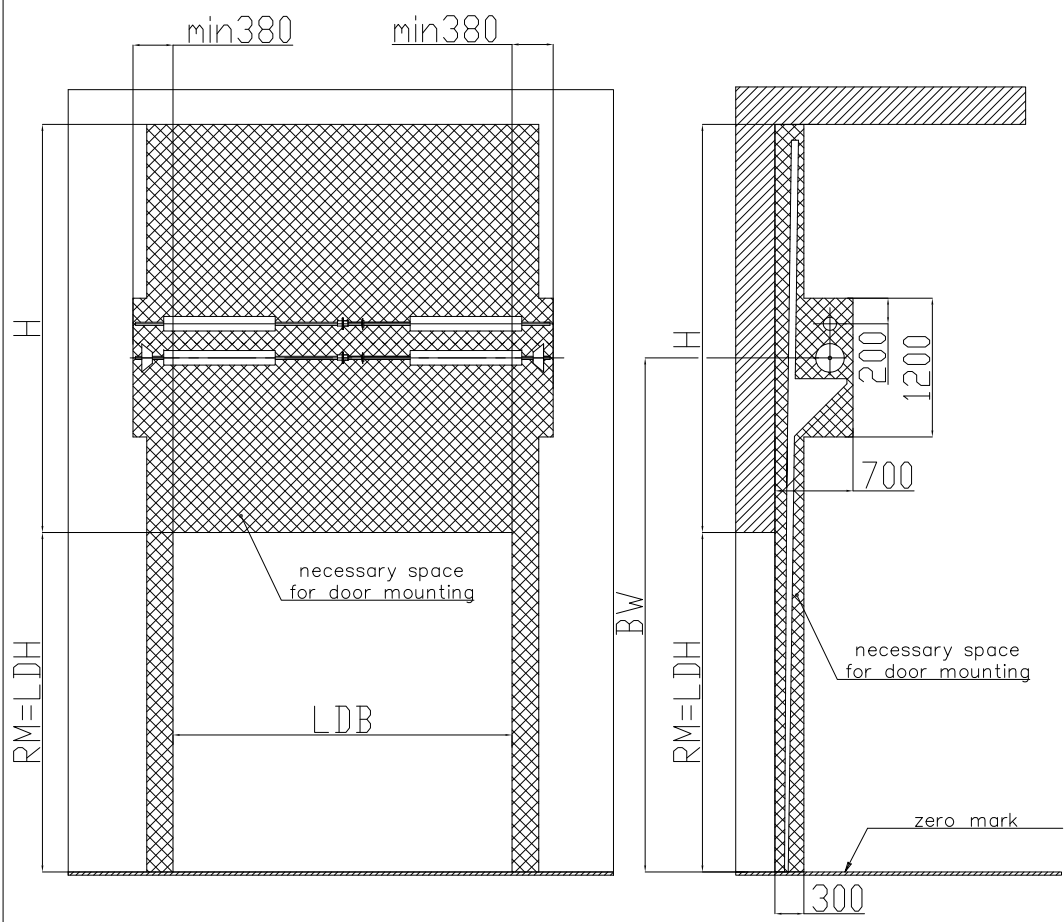
Two-shaft balance system

Description of door construction without wicket

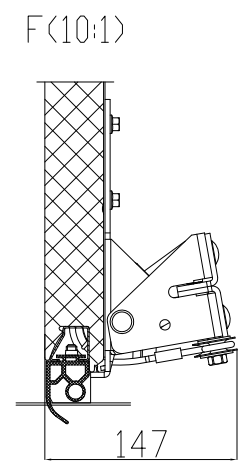
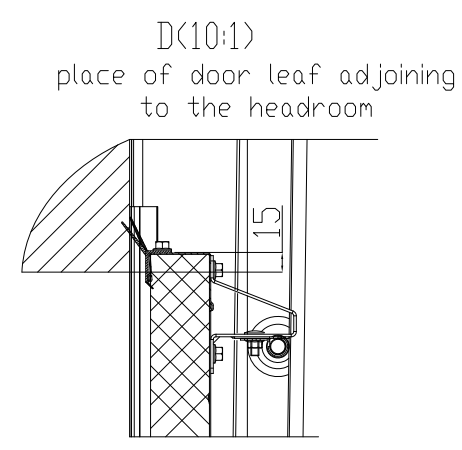
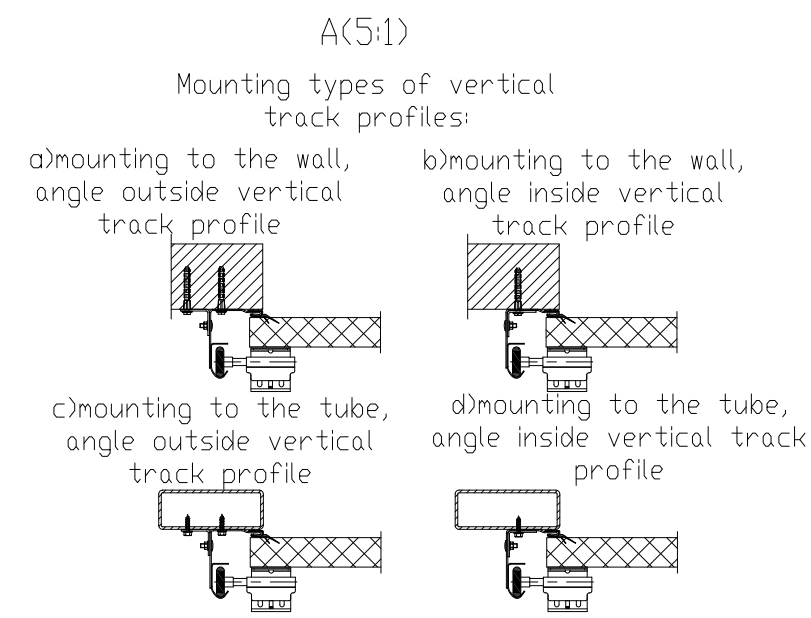


№	Title	Code number
1	intermediate bracket	IB-152-5/4
2	chain drum	CD018V-5/4
3	spring break device	SBD-TSS5
4	spring	TS485x51x1750
6	couple adjustable	AC-5/4
7	shaft	TSS-5/4
8	intermediate hinge	IH113
9	spring bumper bracket	SB-485
12	headroom	PRG7N
13	upper roller bracket	RB1125
14	side roller bracket	RB1123
15	slide bolt	LR10103
16	handle	HG1007
17	bottom seal	RSB10
18	electrical drive	Dynamic xs. plus
19	bottom roller bracket with safety lock against steel rope tearing	RB1446
20	vertical track profile	
21	steel rope	105610
22	top profile	PRG-14
23	top seal	RST01

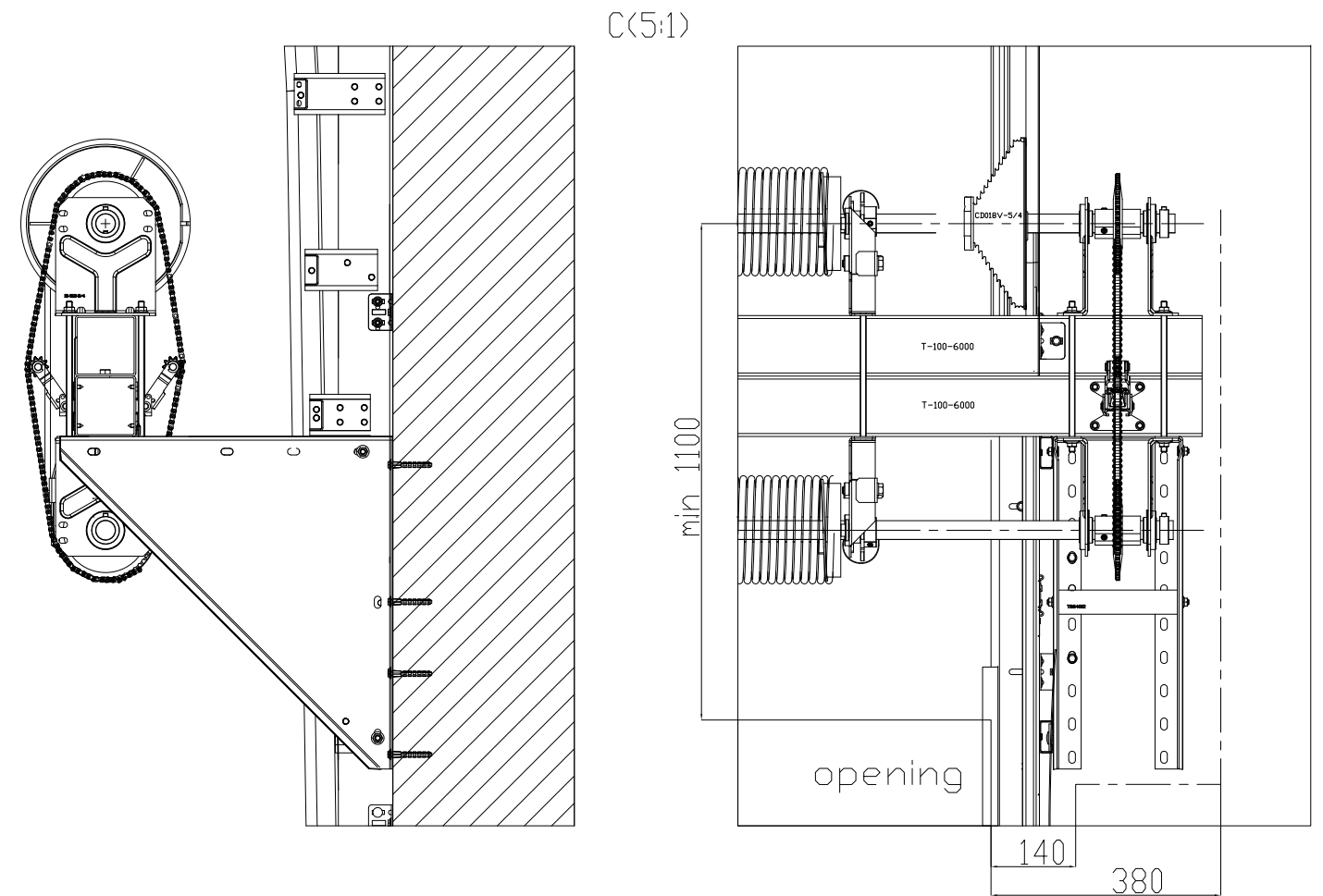
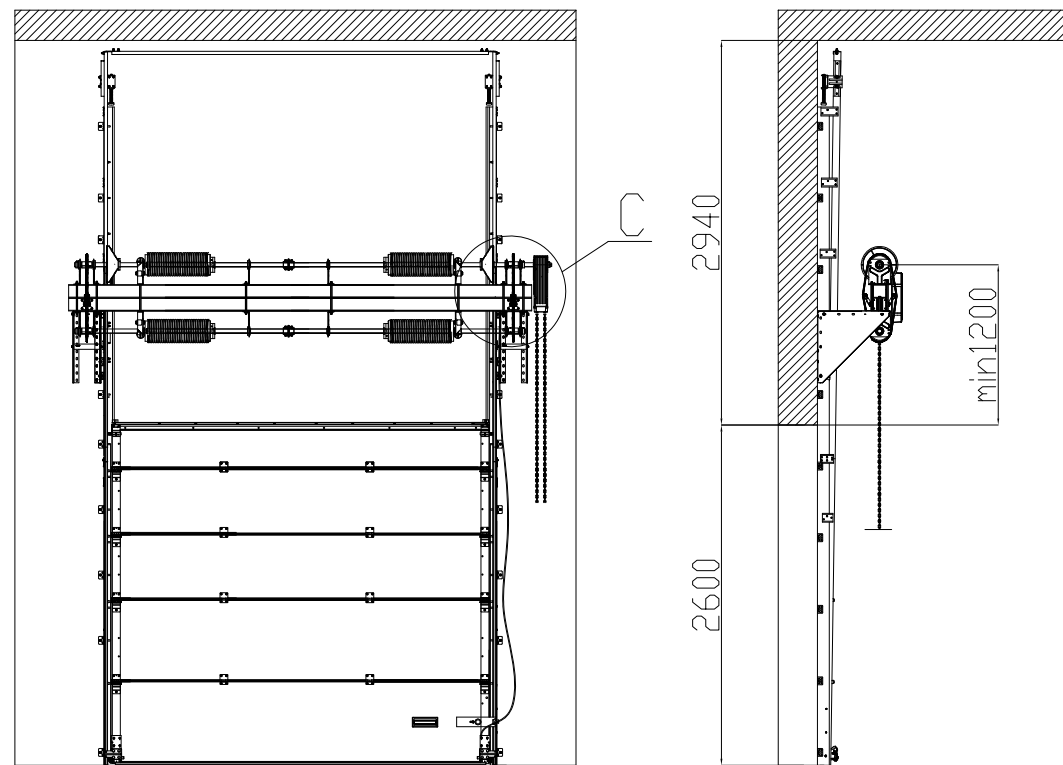
Mounting drawing of the door



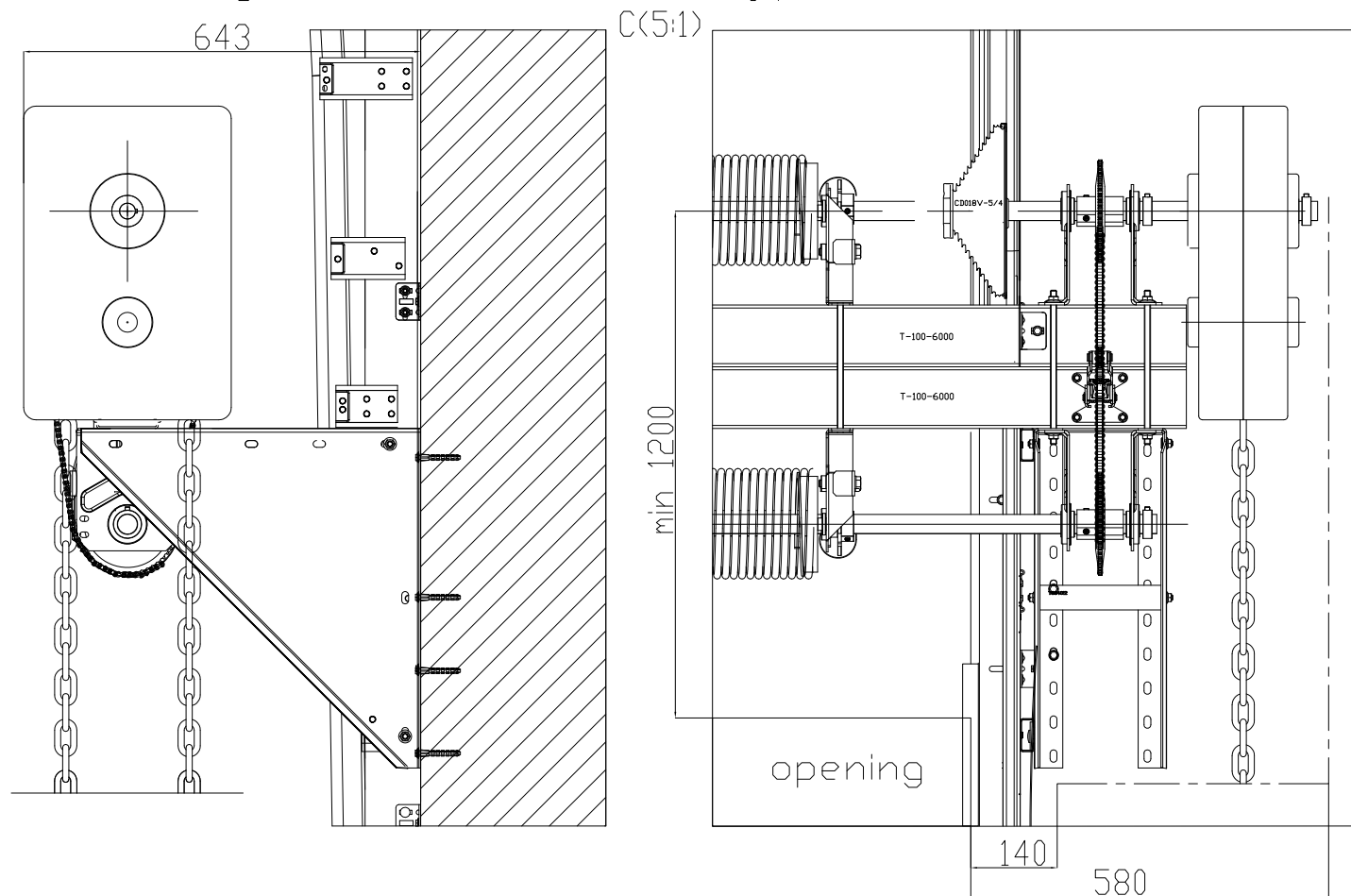
Parameter	Title	Calculating formula or value
H, mm	headroom height	min RM+340
BW, mm	height up to the shaft axis	from min RM+1200 up to RM-HL-400
* The size is to be stipulated when ordering. Default value: BW=RM+1500 mm		



Height of the door opening - 2600 mm, headroom height - min2940 mm.



Additional parameters of the opening when using a chain drive of type CH0501.



Additional parameters of the opening when using an electrical drive fixed on the door shaft

